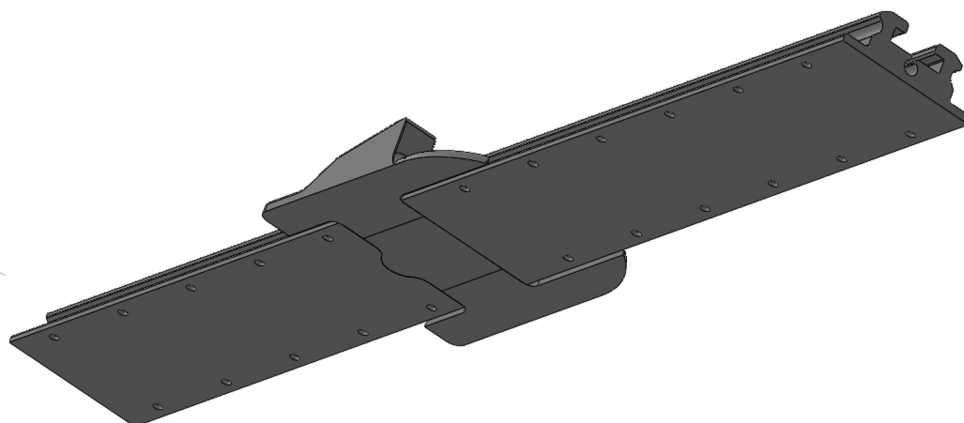


Reef Track Autolock
Position:
Full hoist and x reef points

Bottom:
Fit_Box-Wedges



Distance Box-Wedges
Will advised by order in detail

Main Halyard Car AUTOLOCK>> TRACK

Installation | Design NOTE:

Material: 17-4 (1025) RVS.

or alternatively

Ti 6al-4v (Grade 5).

The wedges that slot into a recess in the track and that is how it is held in place on the mast. What is not pictured yet are the retaining screws that hold the wedges to the back of the track. We have not designed that yet however you can count on a few screws to hold it in position while most of the sheer load will be taken by the recess and the track.